



Dickenson County Public Schools

Enrollment Trend Analysis and Projections

K and C Associated, LLC

Dickenson County Public Schools

K and C Associated, LLC

- Richmond Based, SWaM certified (Small, Women-owned, and Minority-owned Business)
 - Dr. Carl Chafin, Ph.D.
 - Managing Partner
 - 20 Years - Chesterfield County Public Schools
 - 15 Years - Consulting for K-12 Divisions
 - Susan Kooch
 - Managing Partner
 - 13 Years – Richmond City Public Schools
 - 9 Years – Consulting for K-12 Divisions
- Services
 - School Facility Planning
 - Program Evaluation and Impact Assessment
 - Geographic Information Systems (GIS)

Dickenson County Public Schools

Projected Total and High School Enrollment

Projected Total Enrollment				
Year	Fall 2016	Low	Middle	High
2021	2103	1815	1879	1924
2026	2103	1574	1681	1761

Projected High School Enrollment				
Year	Fall 2016	Low	Middle	High
2021	636	560	575	594
2026	636	498	520	547

Source: Virginia Department of Education Fall Membership

Dickenson County Public Schools

Projected Middle School and Elementary Enrollment

Projected Middle School Enrollment				
Year	Fall 2016	Low	Middle	High
2021	472	367	405	413
2026	472	341	348	391

Projected Elementary Enrollment				
Year	Fall 2016	Low	Middle	High
2021	995	888	899	917
2026	995	735	813	823

Source: Virginia Department of Education Fall Membership

Dickenson County Public Schools

5 and 10 year Individual Elementary Enrollment Projection

Kindergarten – 5th Grade

Kindergarten - 5th Grade					
School	Actual	Projected Enrollment Range			
	2016	2021		2026	
	Fall	Low	High	Low	High
Clintwood	486	435	449	360	403
Sandlick	384	342	353	283	317
Ervinton	125	111	115	92	103
Total Elementary	995	888	917	735	823

Source: Virginia Department of Education Fall Membership

Dickenson County Public Schools

Changes from Fall Membership 2016 to April 29, 2017

School Name	2016 Fall Membership	April 29th, 2017	Change
Clintwood Elementary	486	478	-8
Ervinton Elementary	125	117	-8
Sandlick Elementary	384	399	15
Ridgeview Middle School	472	463	-9
Ridgeview High School	636	601	-35
Grand Total	2103	2058	-45

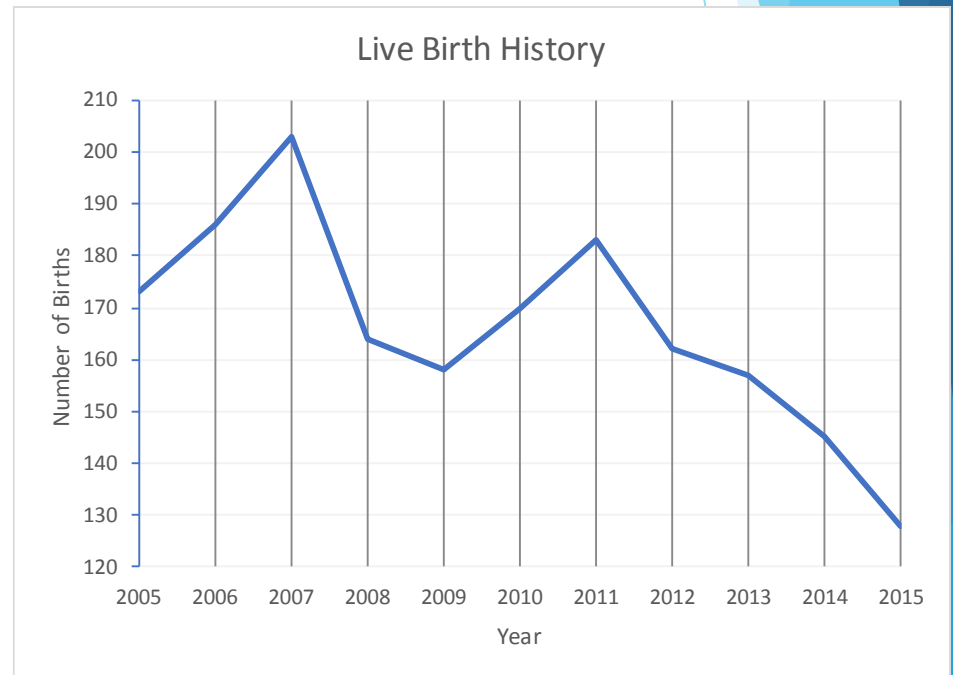
Source: Virginia Department of Education Fall Membership

Dickenson County Public Schools

Live Birth History

Live Birth History			
Fall of	Live Births	Change	% change
2005	173		
2006	186	13	8%
2007	203	17	9%
2008	164	-39	-19%
2009	158	-6	-4%
2010	170	12	8%
2011	183	13	8%
2012	162	-21	-11%
2013	157	-5	-3%
2014	145	-12	-8%
2015	128	-17	-12%

Source: Virginia Department of Health



Dickenson County Public Schools

Birth to Kindergarten Survival

Birth to K Cohort Survival				
Fall of	Births	Fall of	K Enroll	Ratio
2002	166	2007	180	1.08
2003	178	2008	199	1.12
2004	163	2009	189	1.16
2005	173	2010	183	1.06
2006	186	2011	197	1.06
2007	203	2012	177	0.87
2008	164	2013	184	1.12
2009	158	2014	175	1.11
2010	170	2015	158	0.93
2011	183	2016	173	0.95
2012	162	2017	122*	0.75
2013	157	2018		
2014	145	2019		
2015	128	2020		

*This total is **projected** by Dickenson County Public Schools

Source: Virginia Department of Health & Virginia Department of Education

Dickenson County Public Schools

Kindergarten to 5th Grade Survival

K to 5th Grade Cohort Survival				
Fall of	K Enroll	Fall of	5th Grade	Ratio
2002	186	2007	176	0.95
2003	215	2008	186	0.87
2004	194	2009	195	1.01
2005	180	2010	187	1.04
2006	170	2011	169	0.99
2007	180	2012	171	0.95
2008	199	2013	155	0.78
2009	189	2014	184	0.97
2010	183	2015	159	0.87
2011	197	2016	178	0.90
2012	177	2017		
2013	184	2018		
2014	175	2019		
2015	158	2020		
2016	173	2021		

Source: Virginia Department of Education Fall Membership

Dickenson County Public Schools

6th to 12th Grade Survival

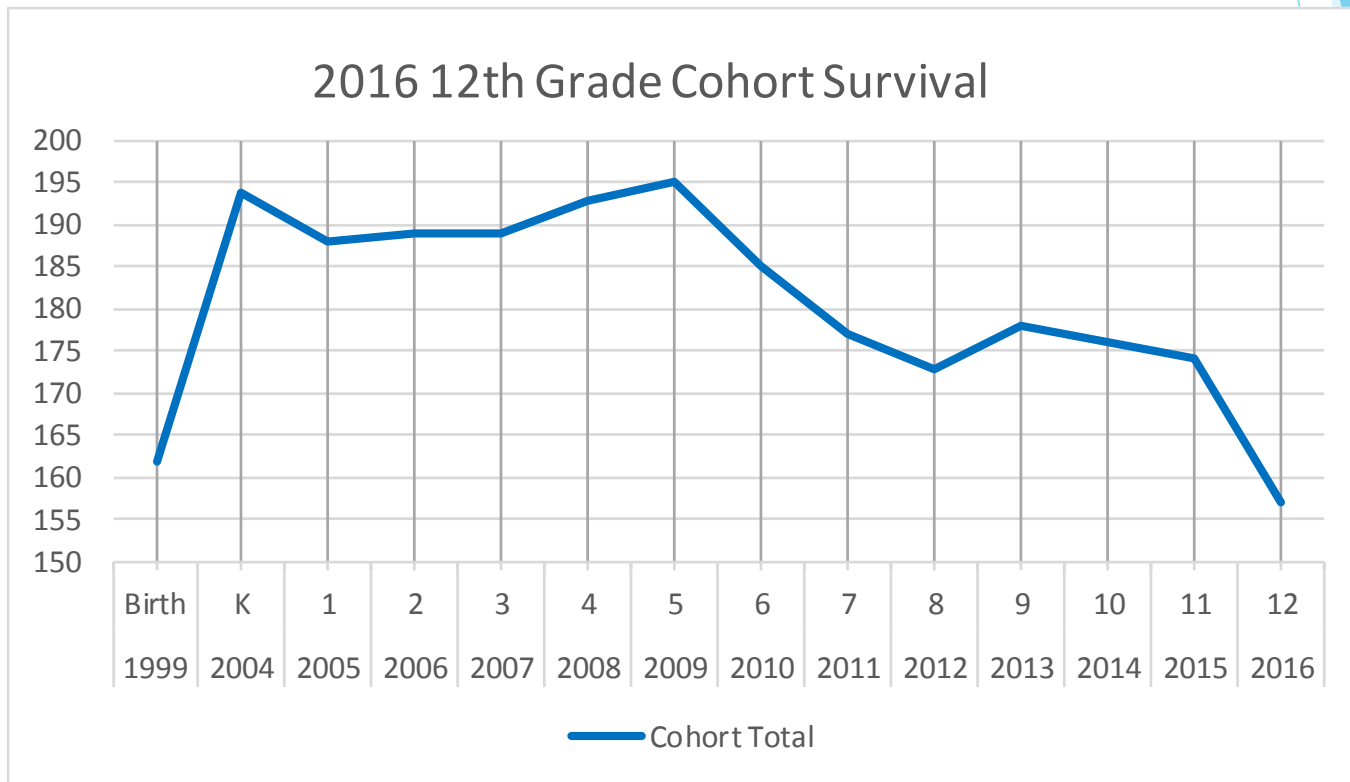
6th to 12th Grade Cohort Survival				
Fall of	6th Grade	Fall of	12th Grade	Ratio
2003	216	2009	189	0.88
2004	194	2010	204	1.05
2005	175	2011	171	0.98
2006	187	2012	164	0.88
2007	189	2013	162	0.86
2008	182	2014	146	0.80
2009	192	2015	188	0.98
2010	185	2016	157	0.85
2011	189	2017		
2012	161	2018		
2013	166	2019		
2014	157	2020		
2015	185	2021		
2016	147	2022		

Source: Virginia Department of Education Fall Membership

Dickenson County Public Schools

Birth to 2016 12th Grade Survival

2016 12th Grade Cohort Survival														
Year	1999	2004	2005	2006	2007	2008	2009	2010	2011	2012	2013	2014	2015	2016
Grade	Birth	K	1	2	3	4	5	6	7	8	9	10	11	12
Cohort Total	162	194	188	189	189	193	195	185	177	173	178	176	174	157

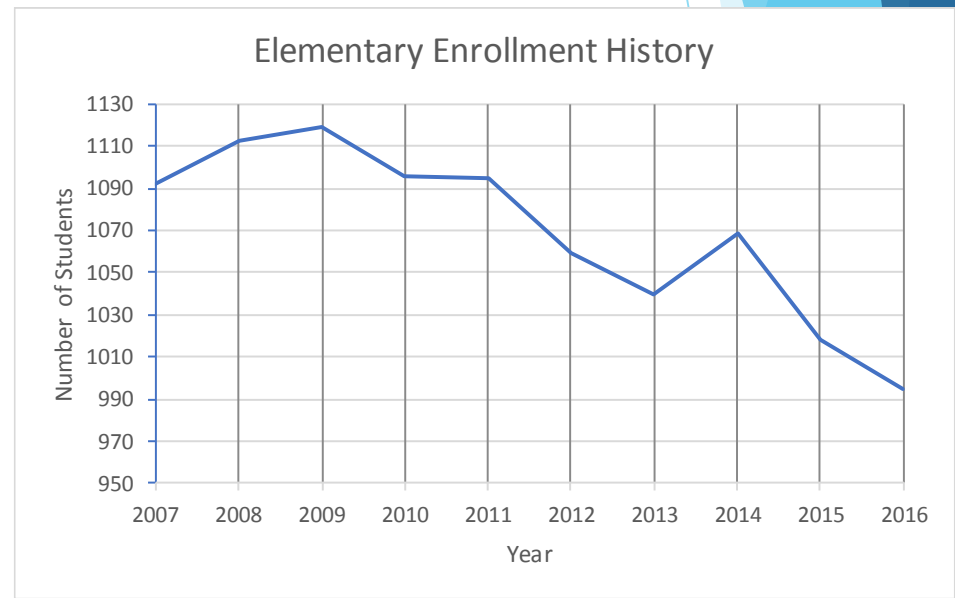


Source: Virginia Department of Health & Virginia Department of Education

Dickenson County Public Schools

Elementary 10 Year Trend Analysis

Elementary Enrollment			
Year	Total	Change	%Change
2007	1092		
2008	1113	21	2%
2009	1119	6	1%
2010	1096	-23	-2%
2011	1095	-1	0%
2012	1059	-36	-3%
2013	1040	-19	-2%
2014	1069	29	3%
2015	1018	-51	-5%
2016	995	-23	-2%

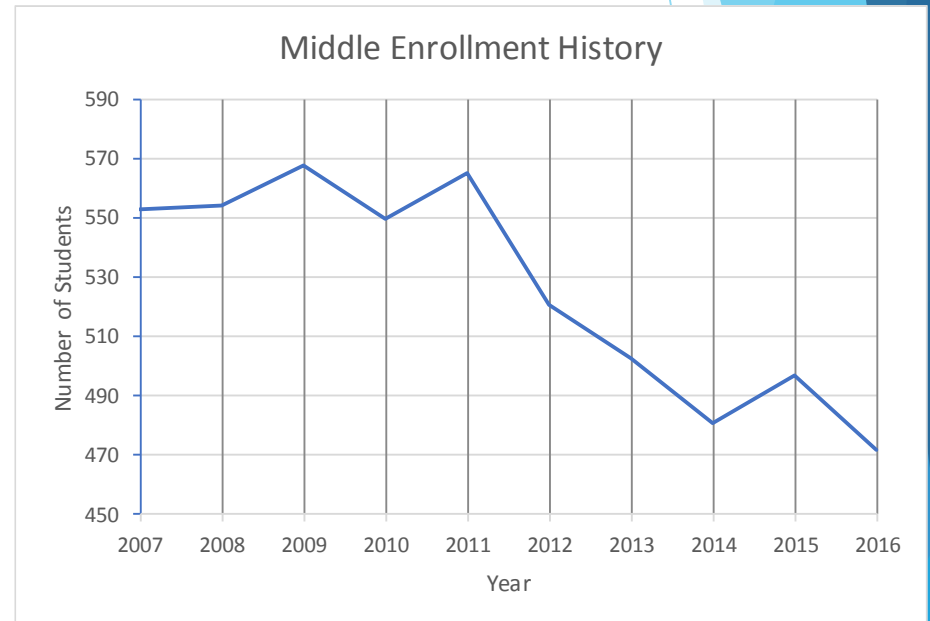


Source: Virginia Department of Education Fall Membership

Dickenson County Public Schools

Middle School Enrollment 10 Year Trend Analysis

Middle Enrollment			
Year	Total	Change	%Change
2007	553		
2008	554	1	0%
2009	568	14	3%
2010	550	-18	-3%
2011	565	15	3%
2012	521	-44	-8%
2013	503	-18	-3%
2014	481	-22	-4%
2015	497	16	3%
2016	472	-25	-5%

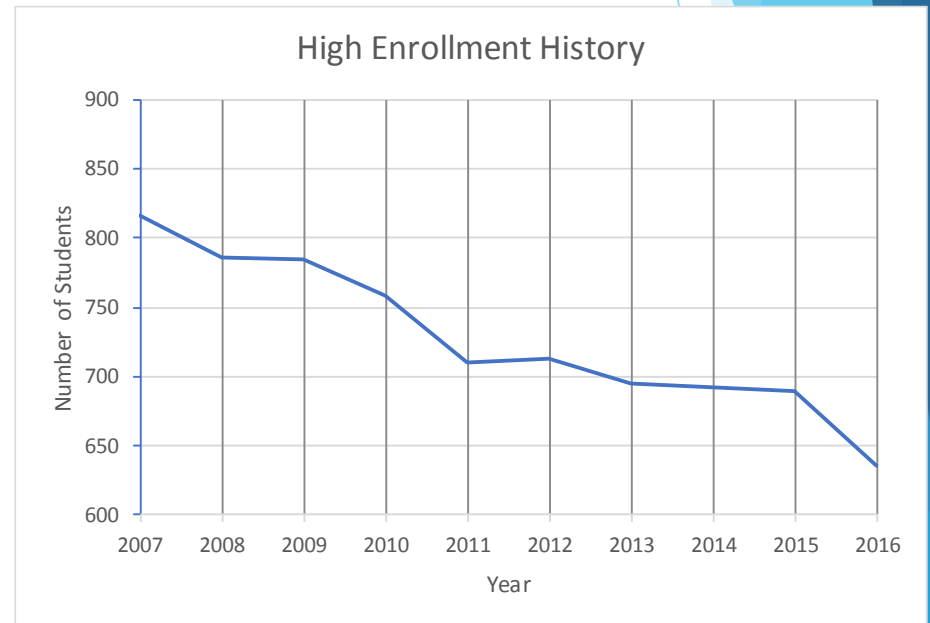


Source: Virginia Department of Education Fall Membership

Dickenson County Public Schools

High School Enrollment 10 Year Trend Analysis

High Enrollment			
Year	Total	Change	%Change
2007	816		
2008	786	-30	-4%
2009	784	-2	0%
2010	758	-26	-3%
2011	710	-48	-6%
2012	713	3	0%
2013	695	-18	-3%
2014	692	-3	0%
2015	690	-2	0%
2016	636	-54	-8%

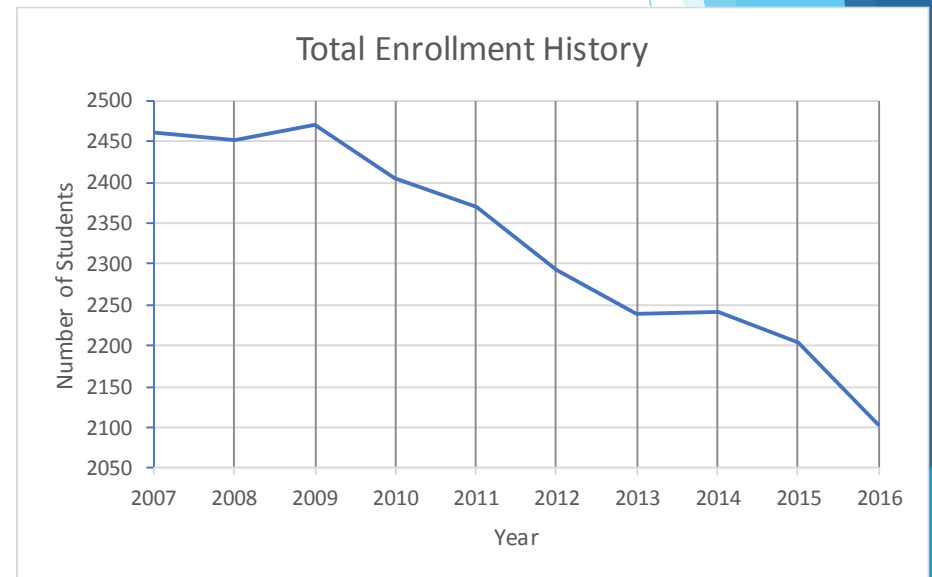


Source: Virginia Department of Education Fall Membership

Dickenson County Public Schools

Total Enrollment 10 Year Trend Analysis

Total Enrollment			
Year	Total	Change	%Change
2007	2461		
2008	2453	-8	0%
2009	2471	18	1%
2010	2404	-67	-3%
2011	2370	-34	-1%
2012	2293	-77	-3%
2013	2238	-55	-2%
2014	2242	4	0%
2015	2205	-37	-2%
2016	2103	-102	-5%



Source: Virginia Department of Education Fall Membership




Dickenson County Public Schools Elementary Population K-5th Grade Residence Analysis

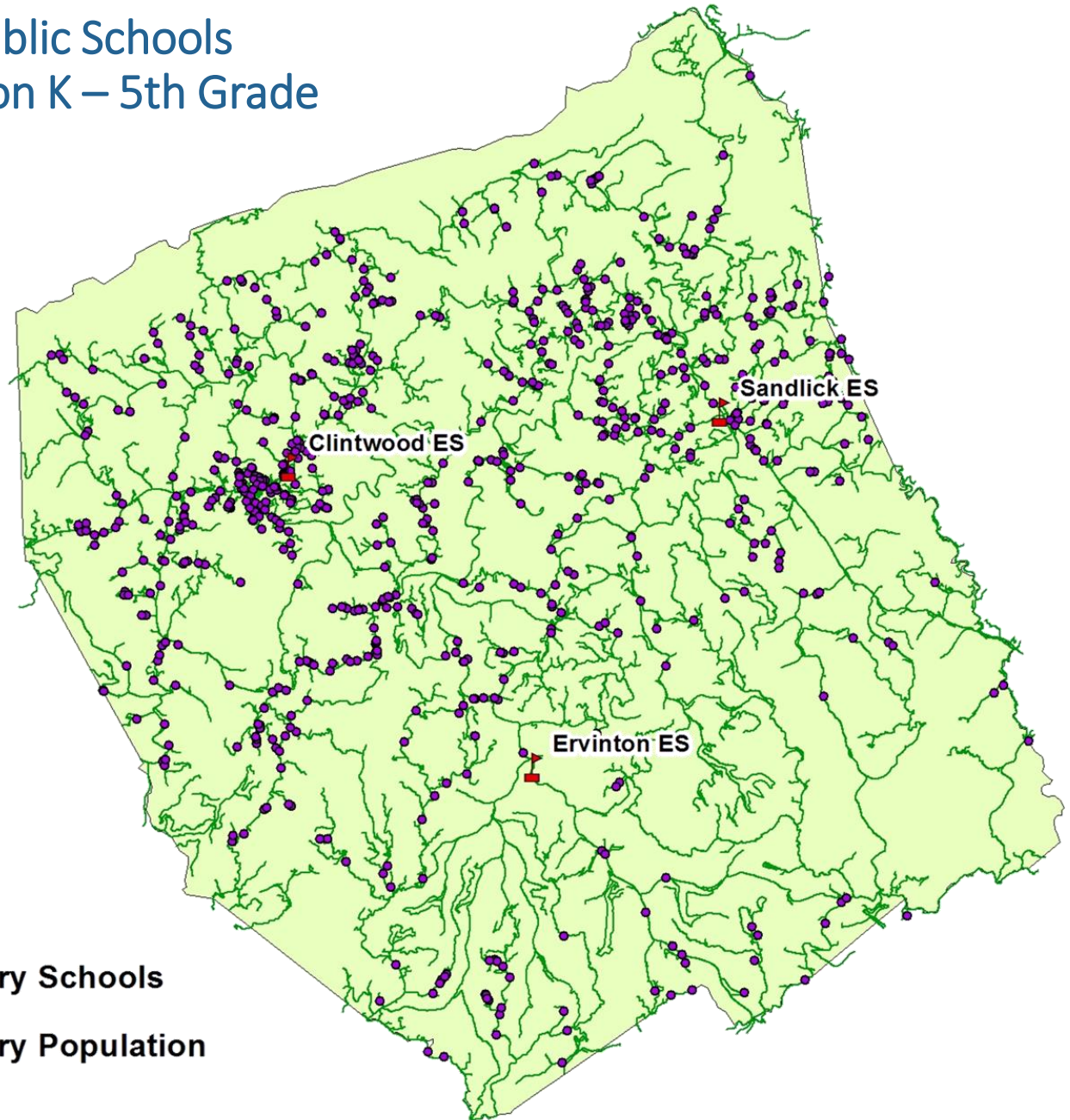
Grade	County of Residence				Grand Total
	Buchanan	Dickenson	Russell	Wise	
KG	8	163	1	1	173
1	3	135		3	141
2	5	169	1	2	177
3	1	164		1	166
4	1	155		2	158
5	6	166	1	2	175
Grand Total	24	952	3	11	990

Dickenson County Public Schools

Elementary Population K – 5th Grade

Legend

-  Elementary Schools
-  Elementary Population
-  Streets

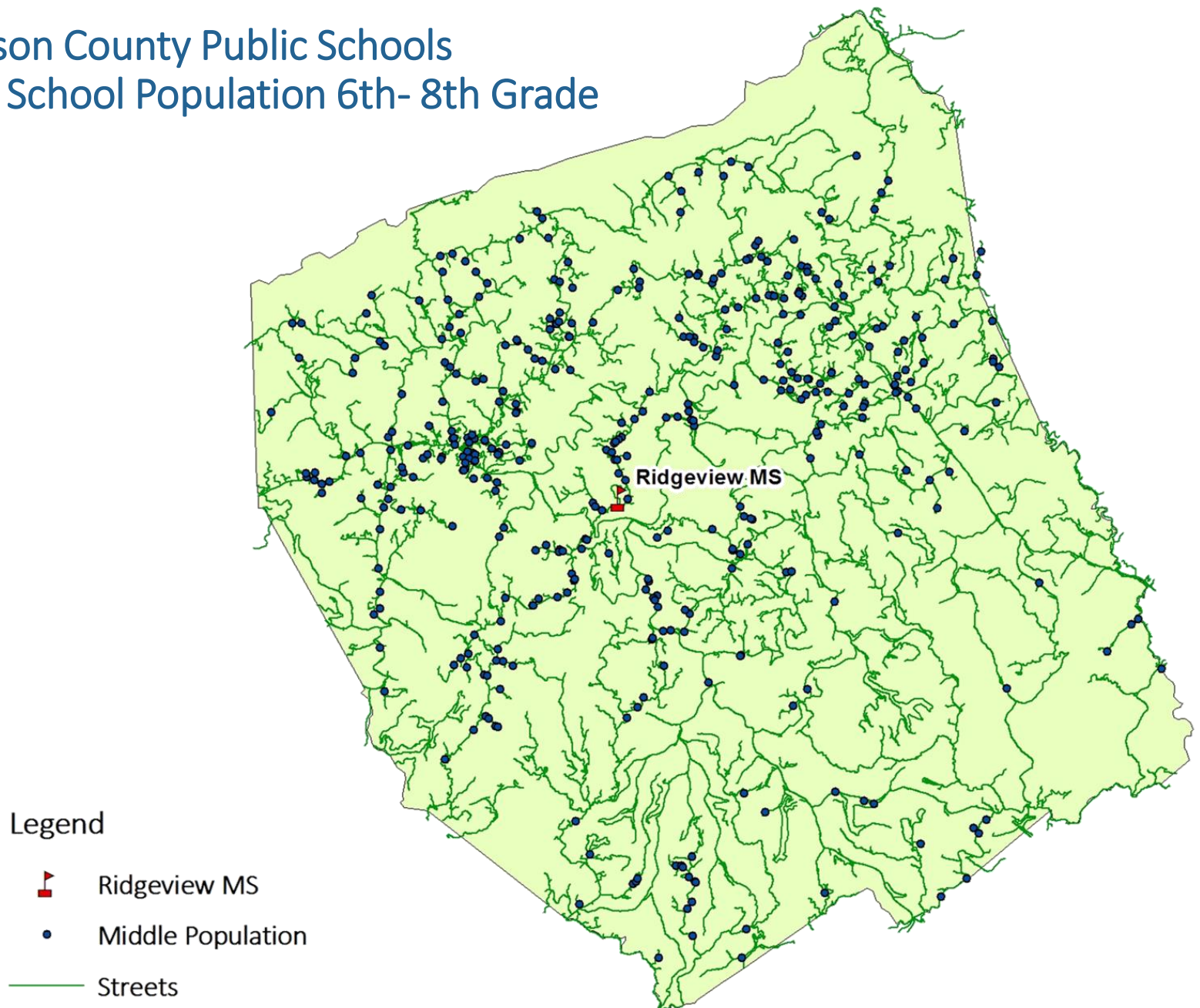


Dickenson County Public Schools
Middle School Population 6th-8th Grade
Residence Analysis

Grade	County of Residence			Grand Total
	Buchanan	Dickenson	Wise	
6	1	144	2	147
7	4	169	2	175
8	1	137	3	141
Grand Total	6	450	7	463

Dickenson County Public Schools

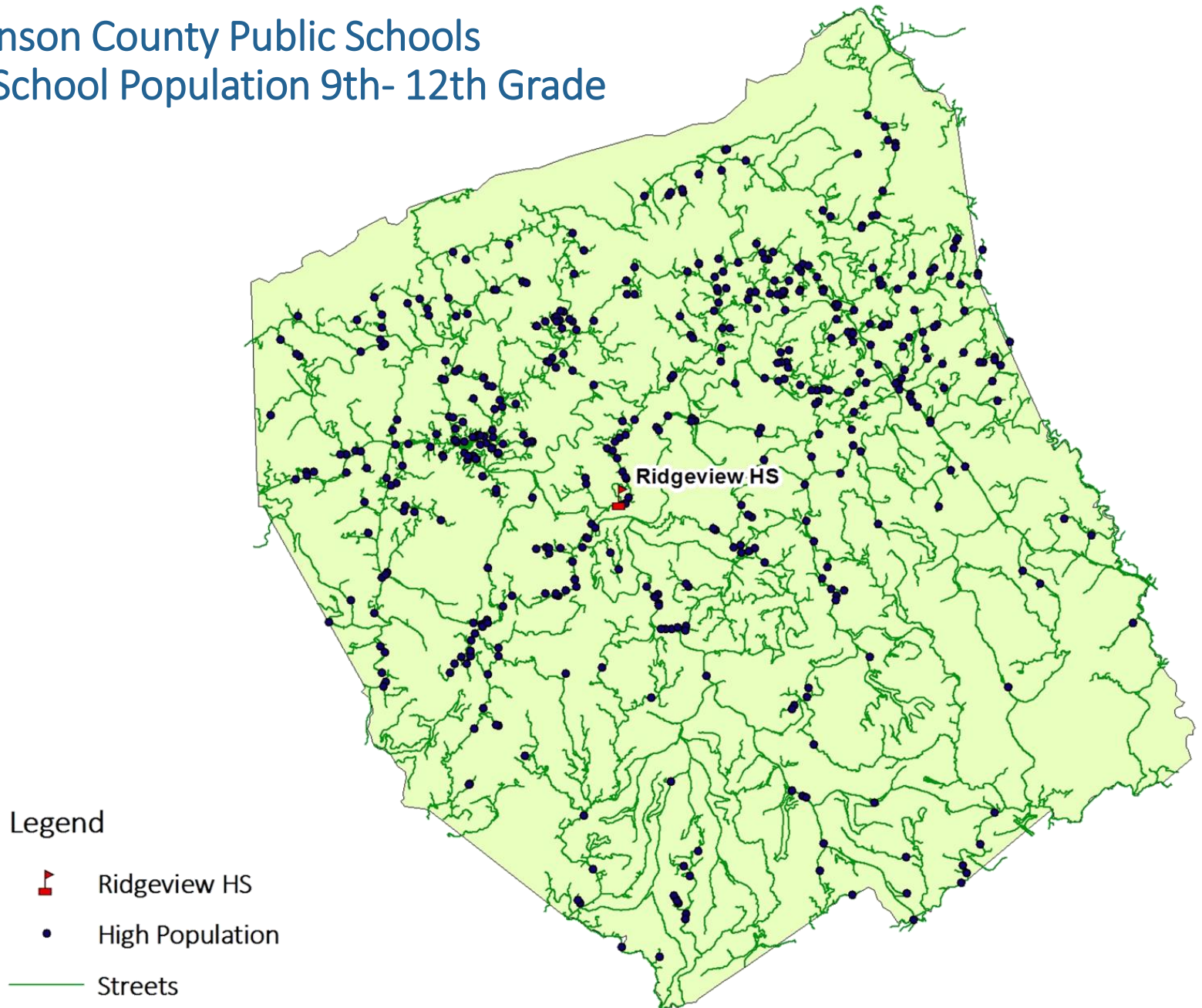
Middle School Population 6th- 8th Grade



Dickenson County Public Schools
High School Population 9th-12th Grade
Residence Analysis

Grade	County of Residence			Grand Total
	Buchanan	Dickenson	Wise	
9	3	161	1	165
10	6	131	4	141
11	4	144	4	152
12	2	132	7	141
Grand Total	15	568	16	599

Dickenson County Public Schools High School Population 9th- 12th Grade



Dickenson County Public Schools

Total Population K – 12th Grade

Residence Analysis

County of Residence					
School Name	Buchanan	Dickenson	Russell	Wise	Grand Total
Clintwood E.S.		465	1	9	475
Ervinton E.S.		113	2	2	117
Sandlick E.S.	24	374			398
Ridgeview M.S.	6	450		7	463
Ridgeview H.S.	15	568		16	599
Grand Total	45	1970	3	34	2052

Dickenson County Public Schools

Total Population K- 12th Grade

Legend



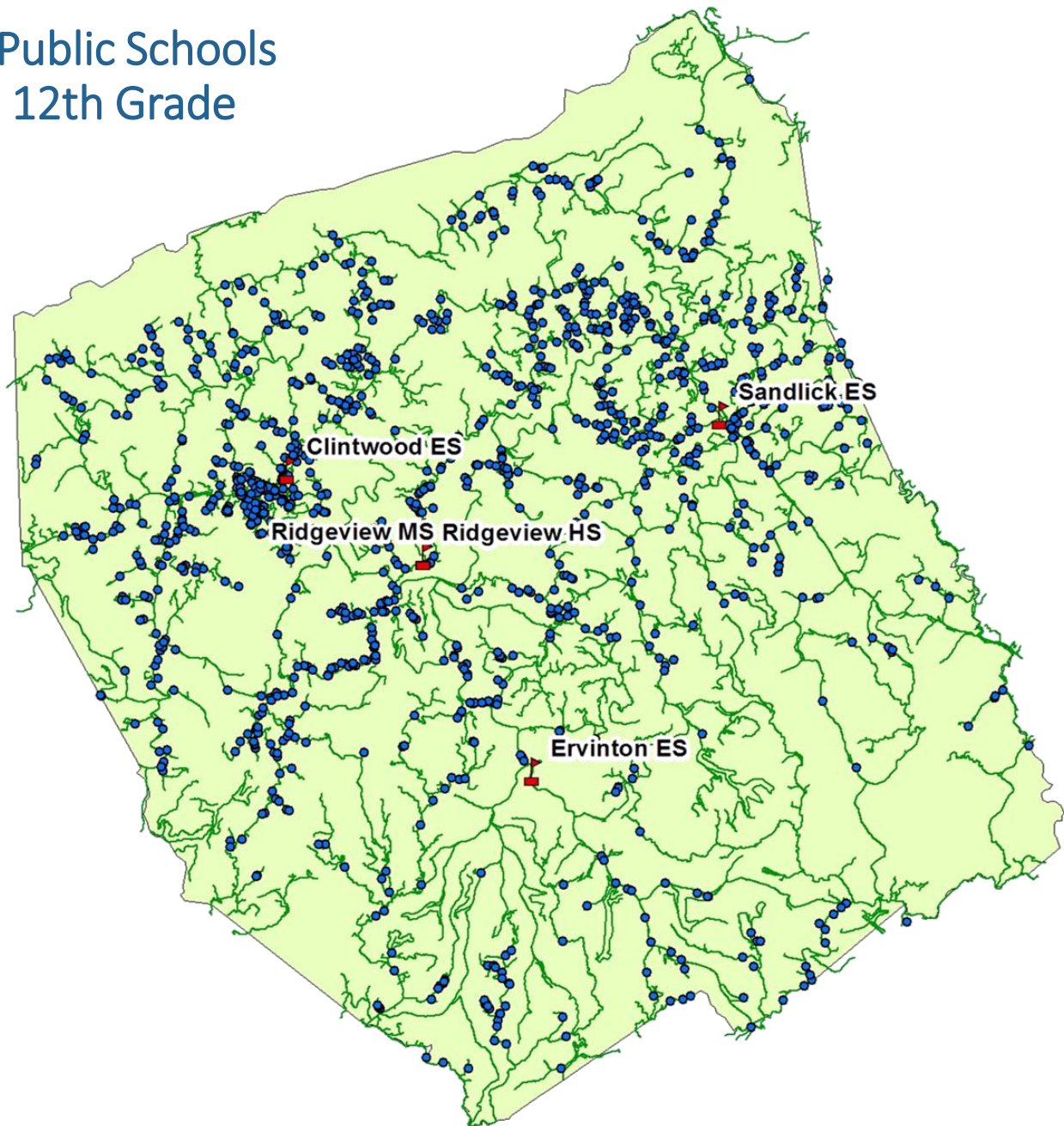
Schools



Total Population



Streets



Dickenson County Public Schools

5 and 10 year Individual Elementary Enrollment Projection

Kindergarten – 5th Grade

Kindergarten - 5th Grade					
School	Actual	Projected Enrollment Range			
	2016	2021		2026	
	Fall	Low	High	Low	High
Clintwood	486	435	449	360	403
Sandlick	384	342	353	283	317
Ervinton	125	111	115	92	103
Total Elementary	995	888	917	735	823

Source: Virginia Department of Education Fall Membership